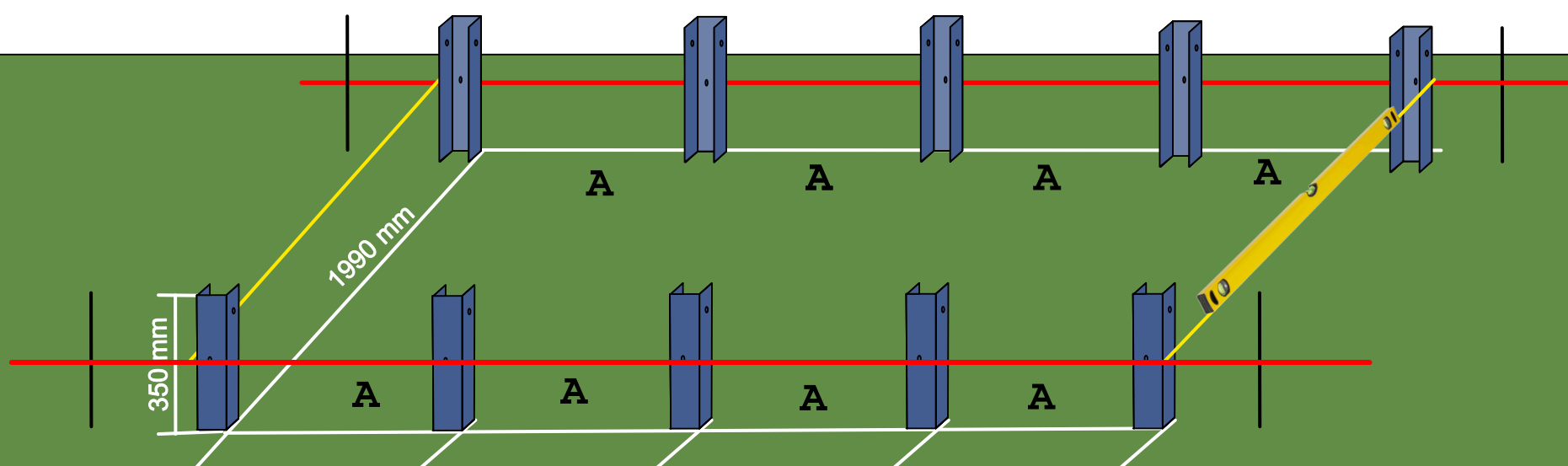
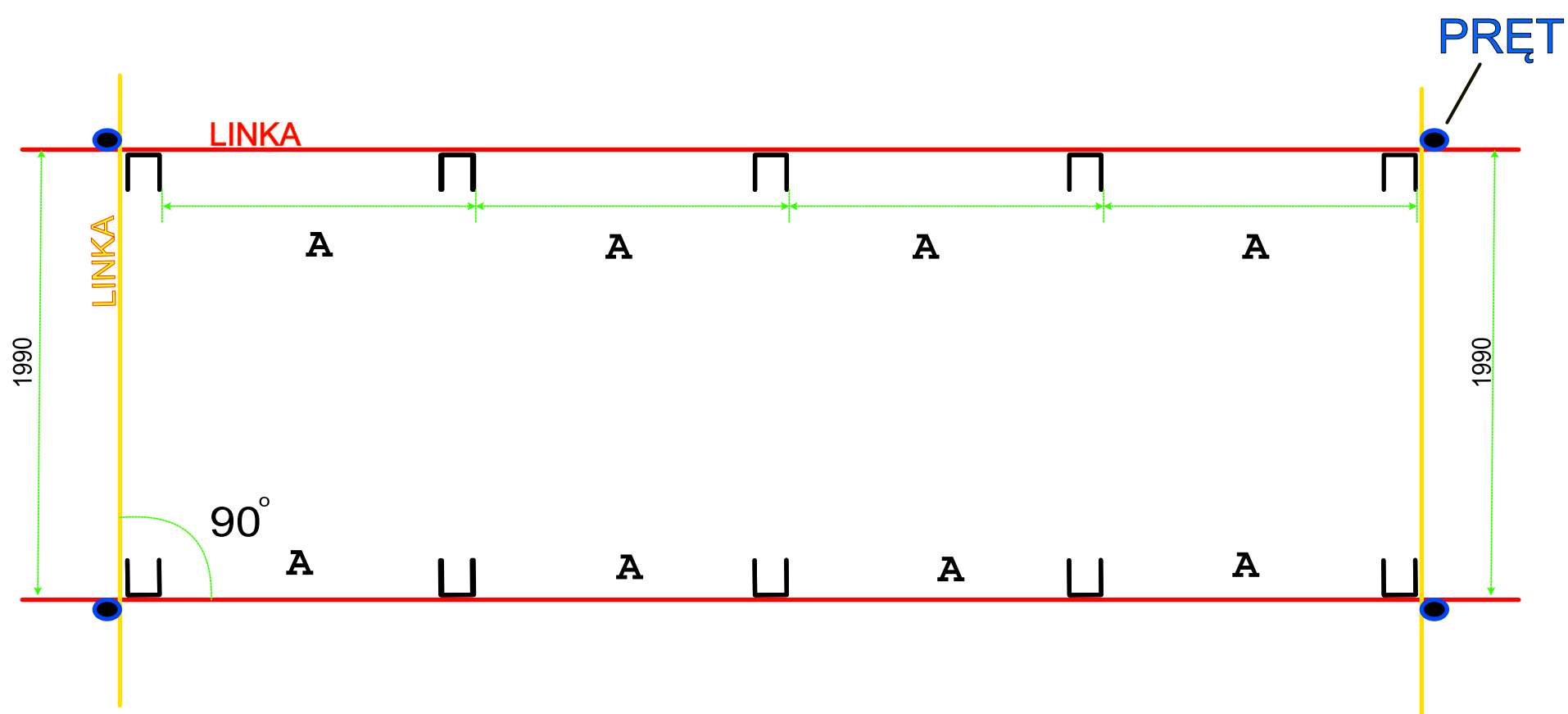
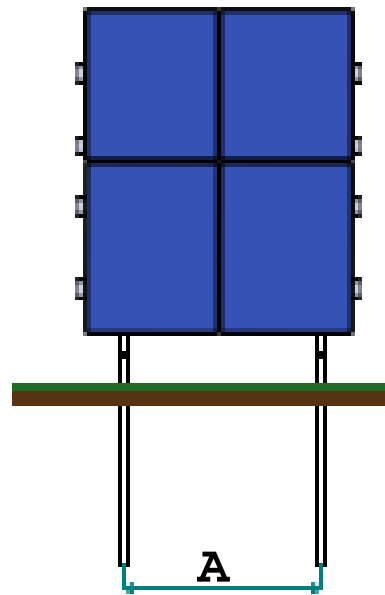


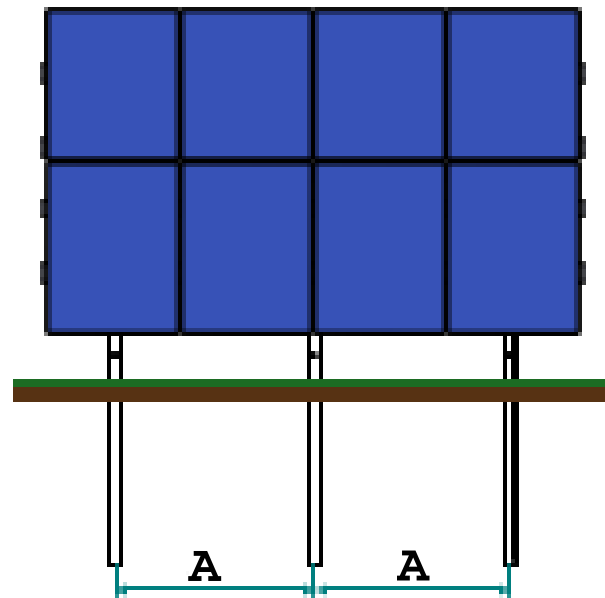
## PRAWIDŁOWY SCHEMAT MONTAŻU PODPÓR WBIJANYCH W GRUNT



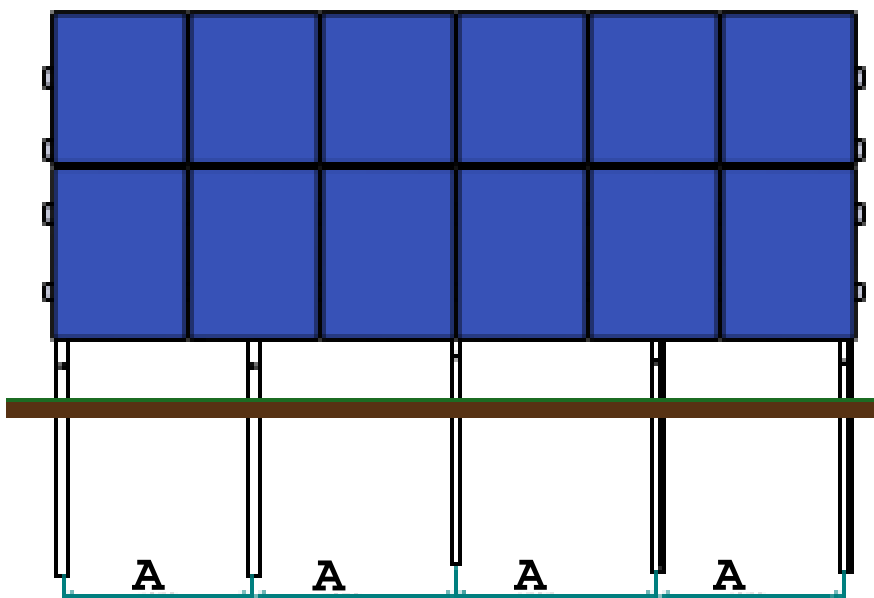
K502/4



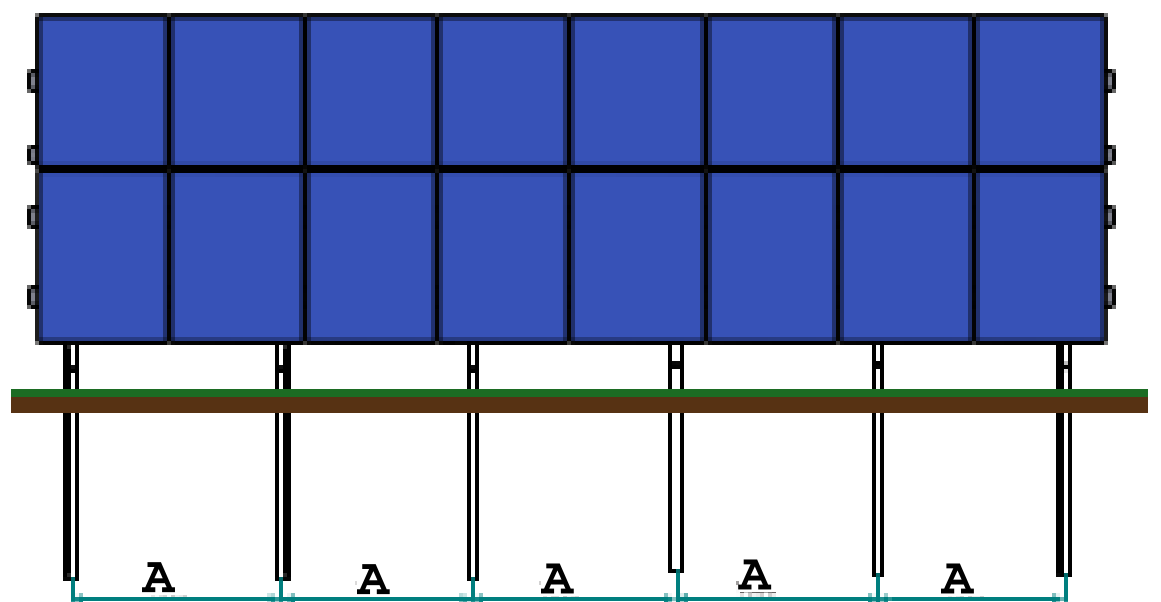
K502/8



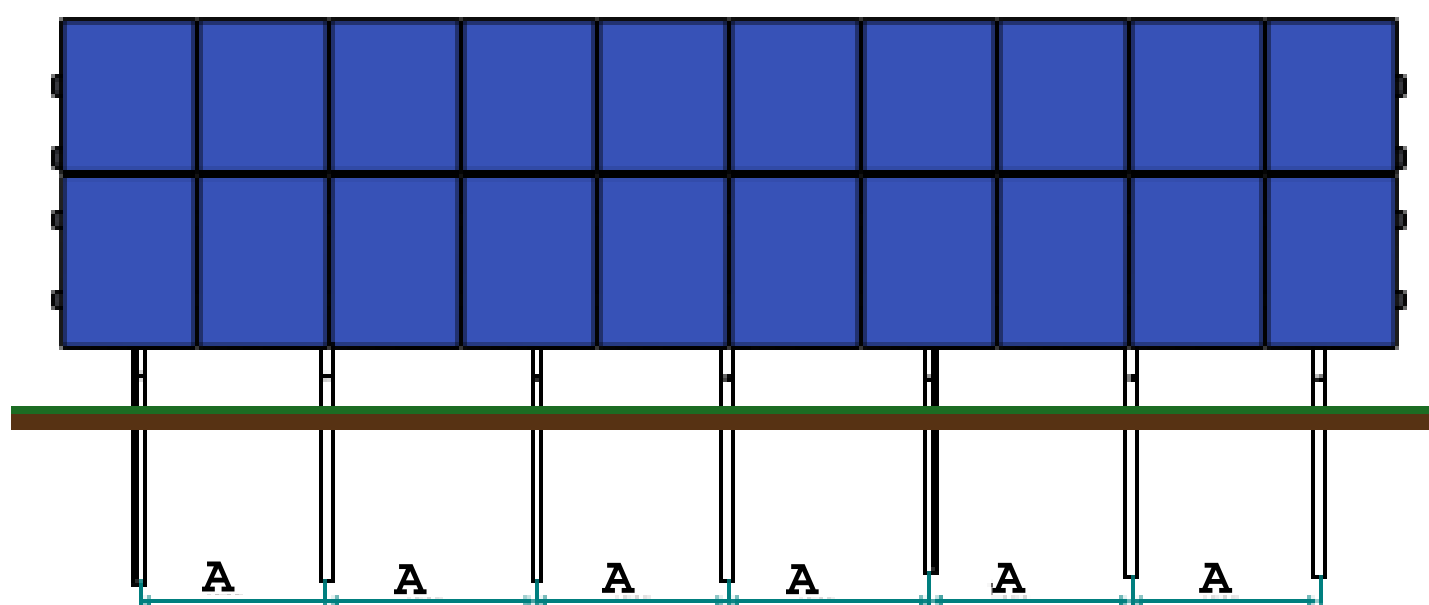
K502/12



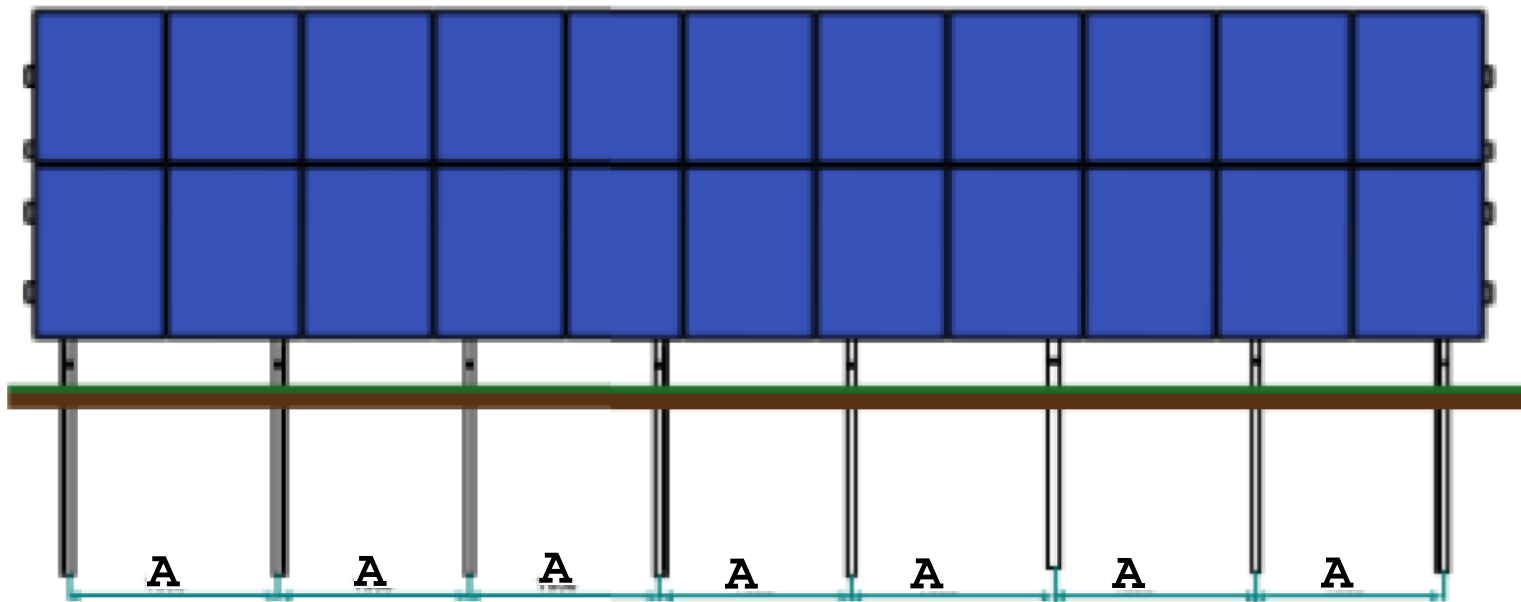
K502/16



K502/20



K502/24



Sugerowany rozstaw nóg dla konstrukcji - Wymiar A

K502/4	-	1500	mm
K502/8	-	1500	mm
K502/12	-	1450	mm
K502/16	-	1500	mm
K502/20	-	1550	mm
K502/24	-	1650	mm